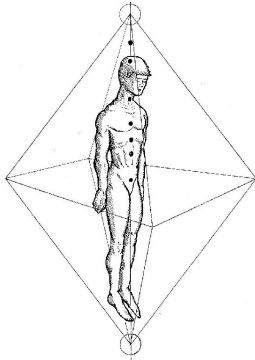




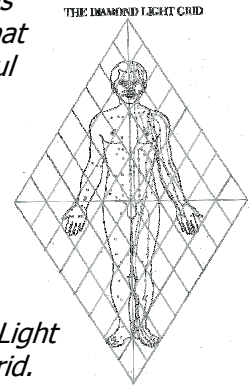
The Diamond Light Grid Activation

The Meditation cd you have just purchased takes you through a very special process to help align with your evolving diamond light body. When we make the commitment to our spiritual journey, we are given opportunities to work through and release our shadow and to be able to hold and transmit more divine light through our physical form. The Diamond Light Grid is an energy form that supports this process.

The diamond or octahedron is a perfect receiver and transmitter of energy, enabling you to both access and receive more light, as well as process this through and then transmit back out. The diamond or octahedron is also an energy form representing a state of perfect balance, so the diamond light grid supports you in maintaining greater balance as the energetic environment we are in steadily intensifies.



Your diamond energy field is oriented around the body as shown in the figure (left). Note there is a core column that runs from top to bottom through the spine, from the 'soul star' energy centre above your head, to the earth star energy centre below your feet.



Your Diamond Light Grid is a network or latticework of etheric light fibres that direct energy through the diamond into and through your physical body. Through this intersecting network of fibres, a number of smaller diamond fields are formed within your greater Diamond Light

Body – 64 in total. See diagram (right) for 2-dimensional representation of the grid.

Running down the centre of your grid and surrounding the core column are 8 smaller diamond fields formed by the intersecting fibres in the grid. It is these that we will be focussing on activating in the process.

An explanation of The Activation Process on the cd

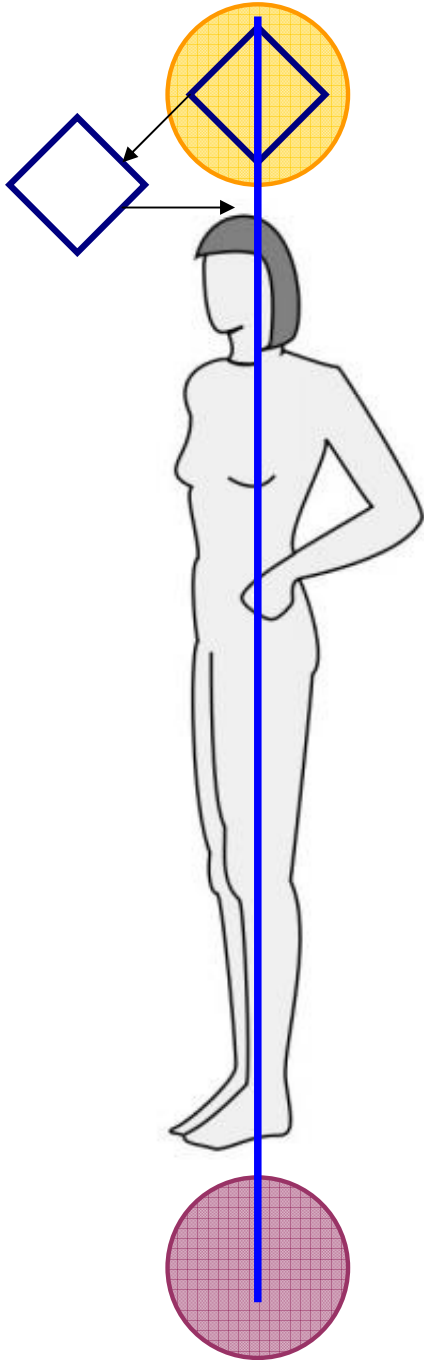
The Diagrams on the following page will help you to visualise the process you will be guided through on this cd.

Diagram 1: Each smaller core diamond is 'born' within your soul star centre. When guided to do so, release each diamond so that you can actually see it spinning in front of you before bringing it back to lock into its correct position around the core. Repeat the process with each of the 8 core diamonds (diagram 2), until you have built up a strong energy core and all core diamonds are in place around the central column (diagram 3).

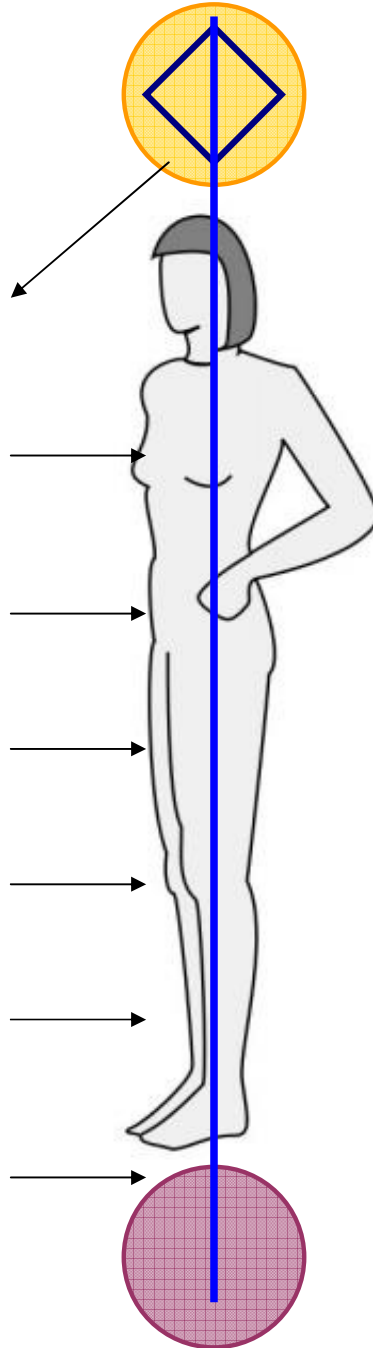
The spinning of these smaller diamond fields around the central column serves to build and move your energy. This activates the energy flow through the grid fibres that make up your larger diamond energy body. Your entire energy space literally lights up.

Enjoy your journey!

1.



2.



3.

